

# Power Converter

## GE 1.5 Mw



**Nº: 619**

|  |                       |
|--|-----------------------|
| Unidades / Pieces :                      | 1                     |
| Fabricante / Manufacturer :              | GE                    |
| Potencia / Power :                       | 1.5 Mw                |
| Año de fabricación / Manufacturing year: | 2010                  |
| Localización / Location:                 | Portugal / Portugal   |
| Disponible / Available :                 | inmediata / immediate |

**Precio por unidad / Price per piece: 18.900 .-€**

Power Converter for 1.5 MW  
Doubly Fed Induction Generator

CATALOG #: 151X1228KA02SA01  
 SERIAL #: B2001SJ  
 Ratings: Line Conv Rotor Conv \*CSA  
 Frequency: 60\*/50 Hz 0 to 60 Hz  
 Voltage: 600\*/690 VAC 600\*/690 VAC rating  
 Continuous: 340Arms 640Arms  
 1 Min OVLD: 450Arms 900Arms  
 10 Sec OVLD: 600Arms 1200Arms  
 1 Sec OVLD: 900Arms 1800Arms  
 Operating Temp: -30 to 45 C  
 Max Sym. S.C.C. Amps: 42000 Max Volts: 600  
 Software IPN: DFIG-1500-5060-A  
 Refer to DS216PWRCNV for Power Converter data



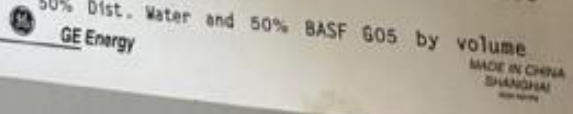
FUSE DATA

| Nom Amps                  | Volts | Type | Manuf  | Nom Amps | Volts | Type | Manuf      |
|---------------------------|-------|------|--------|----------|-------|------|------------|
| CDCPUP 10                 | 700   | FWP  | Buss   | FU1      | 5     | 660  | GRB Ferraz |
| CDCFUN 10                 | 700   | FWP  | Buss   | FU11     | 5     | 660  | GRB Ferraz |
| ACLFU1                    | 400   | **   | Ferraz | FU2      | 8     | 250  | 312 Littel |
| ACLFU2                    | 400   | **   | Ferraz | FU3      | 8     | 250  | 312 Littel |
| ACLFU3                    | 400   | **   | Ferraz | FU4      | 1.5   | 250  | 2AG Littel |
| ** Type 6.9URD32D11A0400C |       |      |        | FU5      | 0.5   | 250  | 2AG Littel |
| ** OR SibaR20 623 31.400  |       |      |        | FU6-7    | 1     | 250  | 2AG Littel |
|                           |       |      |        | FU8      | 0.5   | 250  | 2AG Littel |
|                           |       |      |        | FU9      | 0.5   | 250  | 2AG Littel |
|                           |       |      |        | FU10     | 2     | 250  | 2AG Littel |
|                           |       |      |        | FU12     | 2     | 250  | 2AG Littel |

FU1 - FU12 are on AEPS

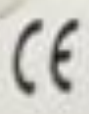
COOLANT DATA

System Capacity 3.7 US GAL (14 L)  
 50% Dist. Water and 50% Valvoline/Zerex G05  
 by vol. Or  
 50% Dist. Water and 50% BASF G05 by volume



GE Energy

300 Garlington Road  
Greenville, S.C. 29615



Panel type: K1 CONTACTOR  
 Order No.: GEWE 421040711  
 Serial No.: GEPC 2472547-038  
 Schematic No.: 107W6543  
 Part No.: 107W6468P001 Rev-  
 Rated Voltage: 690V / 400V AC 50Hz  
 Control Voltage: 230V AC / 24V DC  
 Date of Manufacture: 14.07.2010

Made by: GE Power Controls Sp. z o.o.  
ul. Leśniczyska, 43-300, Białko-Biał, Poland







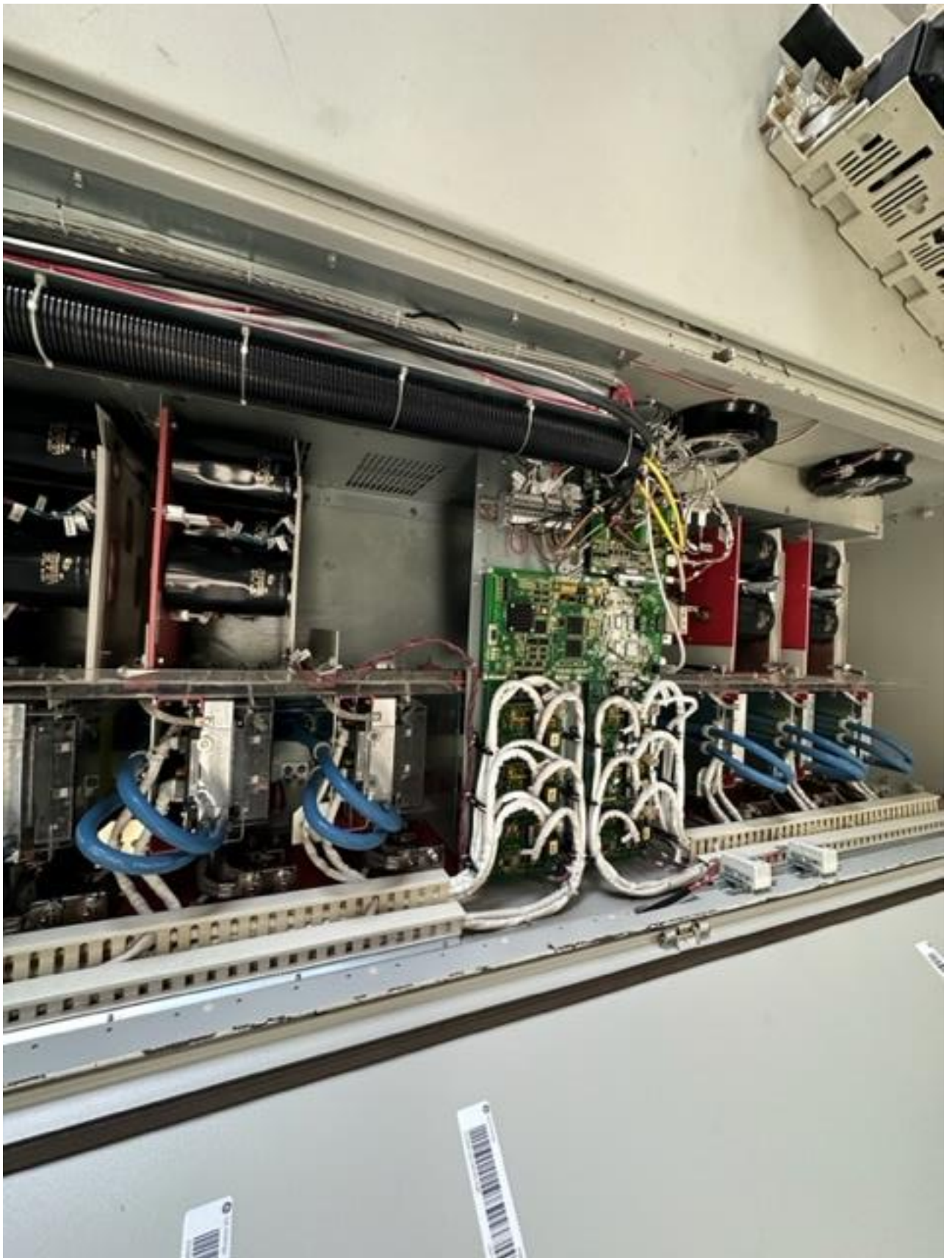




































Produktions-Nr.  
614103 0411000000  
Telefon: 010271-9800.0  
Telefax: 010271-9800.3055

GE Wind Energy GmbH

Vor Inbetriebnahme die Bedienungsanleitung  
und Sicherheitsvorschriften lesen und beachten!

CE

GE Wind Energy GmbH

Typ: \_\_\_\_\_  
Revisions-Nr.: \_\_\_\_\_  
Kunden-Nr.: \_\_\_\_\_



Umrichter  
FA 42289





